



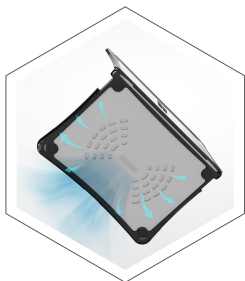
HEXPACT

SecureLock - Surface Laptop

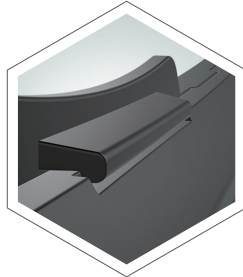
Keep Surface Laptops Closed. Reduce Screen Damage.



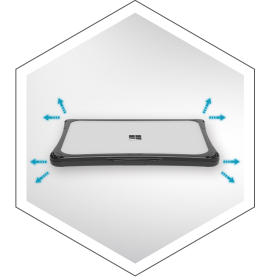
4-Layer Protection
Designed for daily classroom drops



Max Ventilation
Keeps devices cool during use



Front Secure Lock
Helps prevent screen damage inside bags



8 Corner Shield
Reinforced protection around key impact points



Corner Drop Resistant
Absorbs impact from accidental drops



Barcode Friendly
No need to remove case for scanning



Military Drop Protection
(4 ft tested)



Eco Guard
(CA65 Compliant)



Custom Colors Available



Contact our sales team today
917-209-0841 | info@ibenzer.com

IBENZER
Live Smart, Protect Smarter

www.ibenzer.com



HEXPACT

SecureLock - Surface Laptop

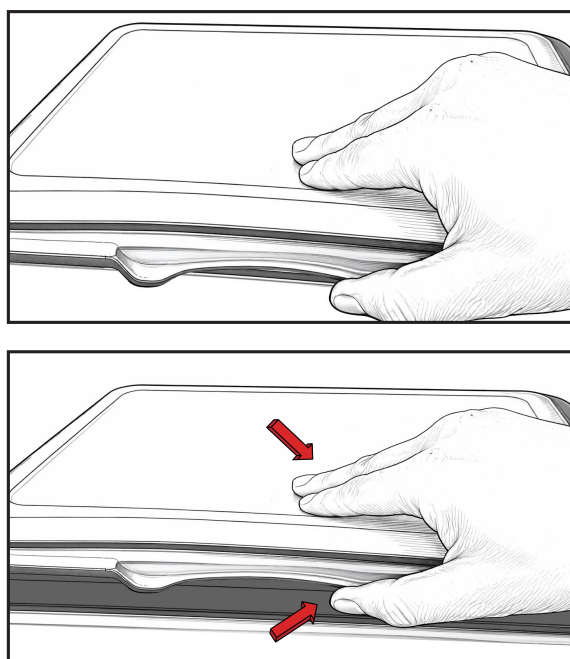
COMPATIBLE MODELS - ALL PART NUMBERS

Brand	Model	Size	Part Number
Microsoft	Surface Laptop 13"	13"	LC-HPE-MSL13BK
Microsoft	Surface Laptop Go 1 / 2 / 3	12.4"	LC-HPE-MS-LG-BK
Microsoft	Surface Laptop SE	11.6"	LC-HPE-MS-LSE-CL
Microsoft	Surface Laptop SE	11.6"	LC-HPE-MS-LSE-BK

Compatible with the most commonly used Chromebook models in K12 environments

Easy open design — no force needed for daily use

Helps reduce hinge damage from improper handling



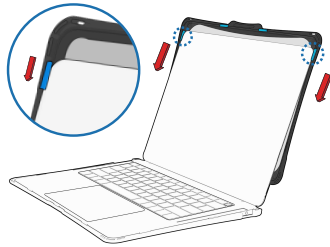


HEXPACT

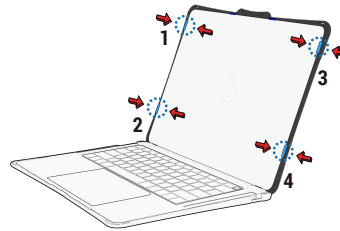
SecureLock - Surface Laptop

Quick installation — no tools required

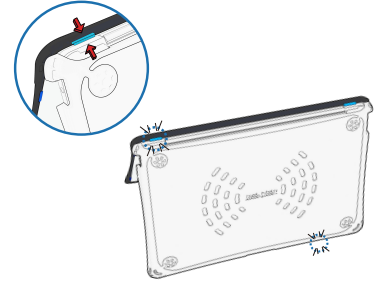
Installation



- 1 Slide the top cover down and align the screen under the both upper side clips until the laptop reaches the top edge of the top cover.



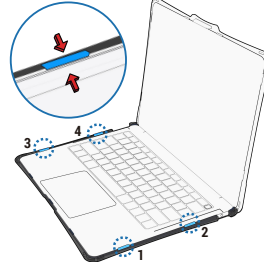
- 2 Press the clips (4) on both sides to ensure each clip is securely attached.



- 3 Flip your laptop to the back and press the two clips onto the lower edge.



- 4 Slide the laptop forward until the device reaches the front edges of the bottom cover.



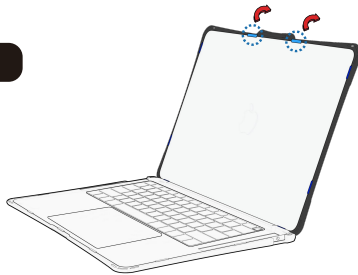
- 5 Press the both side clips (4) to snap onto the device.



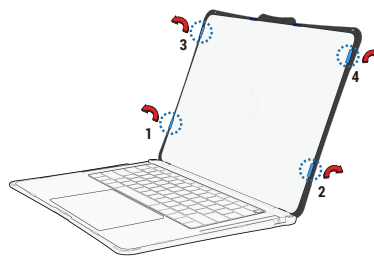
- 6 Press the rear corner clips to snap into place.

Quick removal — no tools required

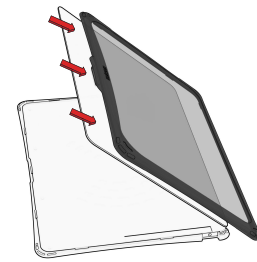
Removal



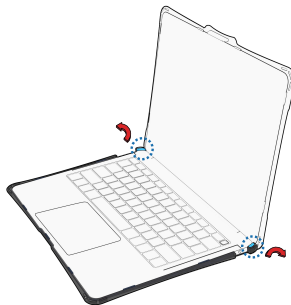
- 1 Push up the two top edge micro clips off your laptop.



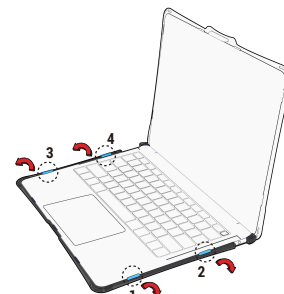
- 2 Push the 4 side clips outward to detach the lower part of the top cover from the device.



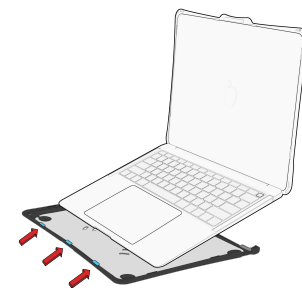
- 3 Slide the top cover down to remove it.



- 4 Press the rear sides clips outward.



- 5 Press the both sides clips (4) off the device.



- 6 Slide the device backward to remove it.