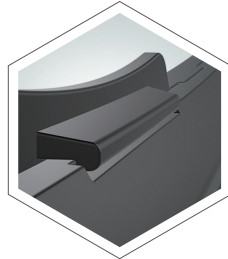




# HEXPACT

## SecureLock - Surface Laptop

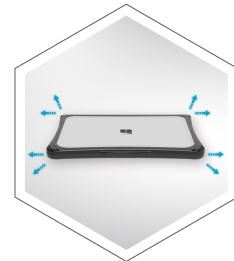
Keep Surface Laptops Closed. Reduce Screen Damage.



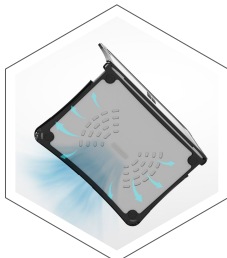
**Front Secure Lock**  
Helps prevent screen damage inside bags



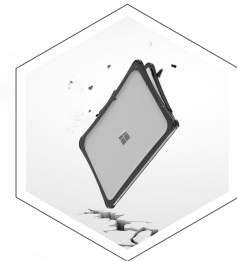
**4-Layer Protection**  
Designed for daily classroom drops



**8 Corner Shield**  
Reinforced protection around key impact points



**Max Ventilation**  
Keeps devices cool during use



**Corner Drop Resistant**  
Absorbs impact from accidental drops



**Barcode Friendly**  
No need to remove case for scanning



**Military Drop Protection**  
(4 ft tested)



**Eco Guard**  
(CA65 Compliant)



**Custom Colors Available**



Contact our sales team today  
917-209-0841 | info@ibenzer.com

**IBENZER**  
Live Smart, Protect Smarter

www.ibenzer.com



# HEXPACT

## SecureLock - Surface Laptop

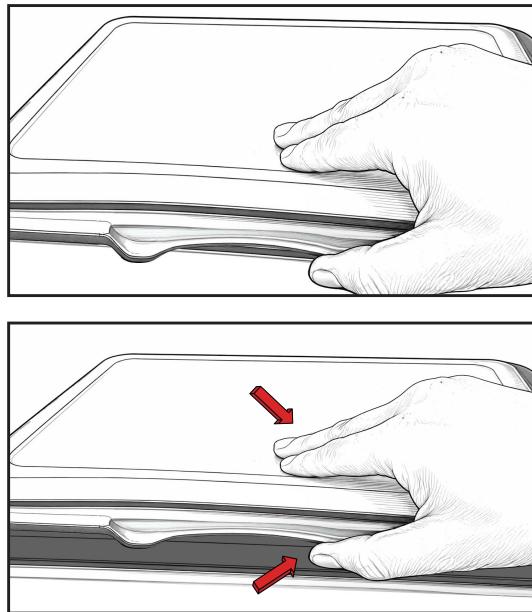
### COMPATIBLE MODELS - ALL PART NUMBERS

Brand	Model	Size	Part Number
Microsoft	Surface Laptop 13"	13"	LC-HPE-MSL13BK
Microsoft	Surface Laptop Go 1 / 2 / 3	12.4"	LC-HPE-MS-LG-BK
Microsoft	Surface Laptop SE	11.6"	LC-HPE-MS-LSE-CL
Microsoft	Surface Laptop SE	11.6"	LC-HPE-MS-LSE-BK

Compatible with the most commonly used Chromebook models in K12 environments

## Easy open design — no force needed for daily use

Helps reduce hinge damage from improper handling



Contact our sales team today  
917-209-0841 | [info@ibenzer.com](mailto:info@ibenzer.com)

**IBENZER**  
Live Smart, Protect Smarter

[www.ibenzer.com](http://www.ibenzer.com)

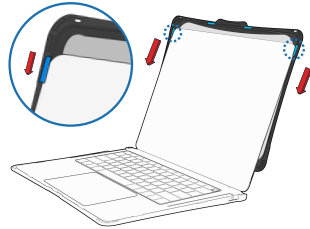


# HEXPACT

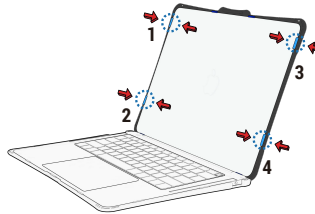
## SecureLock - Surface Laptop

### Quick installation — no tools required

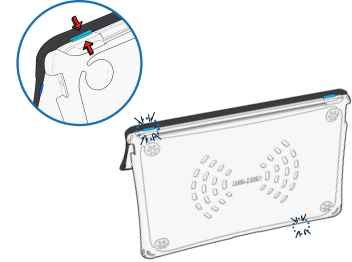
#### Installation



- 1 Slide the top cover down and align the screen under the both upper side clips until the laptop reaches the top edge of the top cover.



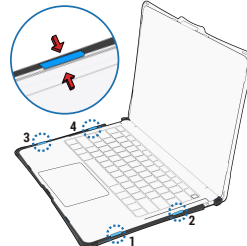
- 2 Press the clips (4) on both sides to ensure each clip is securely attached.



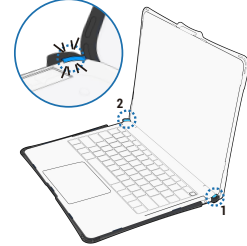
- 3 Flip your laptop to the back and press the two clips onto the lower edge.



- 4 Slide the laptop forward until the device reaches the front edges of the bottom cover.



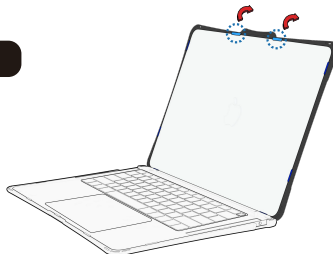
- 5 Press the both side clips (4) to snap onto the device.



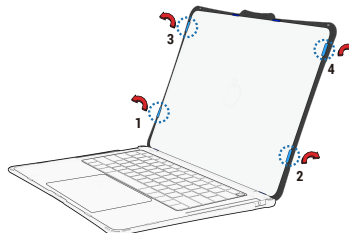
- 6 Press the rear corner clips to snap into place.

### Quick removal — no tools required

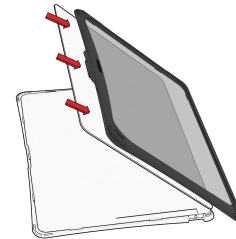
#### Removal



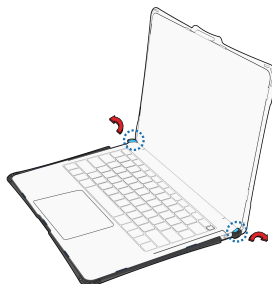
- 1 Push up the two top edge micro clips off your laptop.



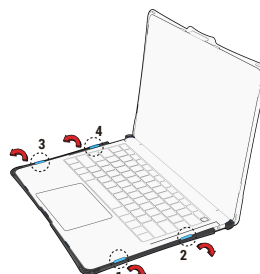
- 2 Push the 4 side clips outward to detach the lower part of the top cover from the device.



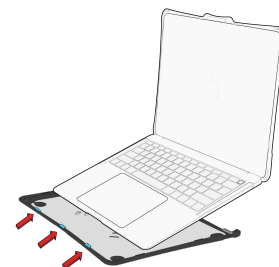
- 3 Slide the top cover down to remove it.



- 4 Press the rear sides clips outward.



- 5 Press the both sides clips (4) off the device.



- 6 Slide the device backward to remove it.